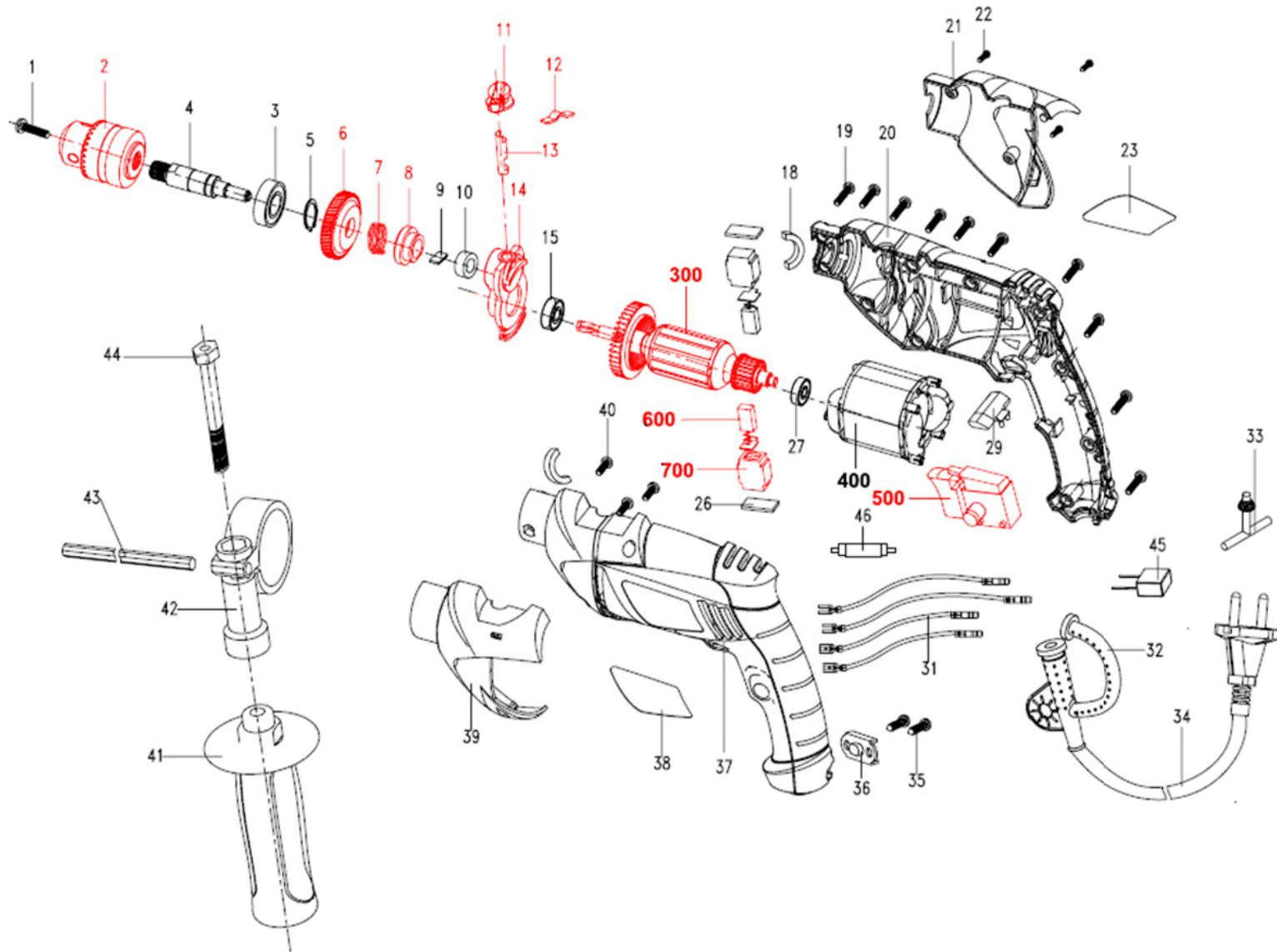




TP 910

TALADRO PERCUTOR





TP 910

TALADRO PERCUTOR

1	TP910R1001	TORNILLO	SCREW (L.H.)
2	TP910R1002	MANDRIL	CHUCK
3	TP910R1003	RODAMIENTO	BALL BEARING
4	TP910R1004	EJE DE SALIDA	SPINDLE
5	TP910R1005	ARANDELA	CIRCLIPS FOR SHAFT
6	TP910R1006	CORONA	GEAR
7	TP910R1007	RESORTE	SPRING
8	TP910R1008	ENGRANAJE	IMPACT GEAR
9	TP910R1009	ESCALA	SCALEBOARD
10	TP910R1010	RODAMIENTO	NEEDLE BEARING
11	TP910R1011	PERILLA	KNOB
12	TP910R1012	SELECTOR	REED
13	TP910R1013	PERNO	LEVER PIN
14	TP910R1014	SOPORTE	BEARING SUPPORT
15	TP910R1015	RODAMIENTO	BALL BEARING
300	TP910R1300	INDUCIDO	ROTOR
18	TP910R1018	ARANDELA	FELT RING
19	TP910R1019	TORNILLO	TAPPING SCREW
20	TP910R1020	CARCAZA DERECHA	RIGHT HOUSING
21	TP910R1021	TAPA	RIGHT ALUM COVER
22	TP910R1022	TORNILLO	TAPPING SCREW
23	TP910R1023	ETIQUETA	NAMEPLATE
600	TP910R1600	JGO. DE CARBONES	CARBON BRUSH
700	TP910R1700	PORTA CARBONES	BRUSH HOLDER
26	TP910R1026	PLACA	FLASH BOARD
27	TP910R1027	RODAMIENTO	BALL BEARING
400	TP910R1400	CAMPO	STATOR
29	TP910R1029	SELECTOR DE MARCHA	F/R BUTTON
500	TP910R1500	INTERRUPTOR	SWITCH
31	TP910R1031	CONECTOR	INTERNAL WIRE ASSY 1-6
32	TP910R1032	PASA CABLE	CORD GUARD
33	TP910R1033	LLAVE DE MANDRIL	KEY
34	TP910R1034	CABLE Y FICHA	POWER CORD & PLUG
35	TP910R1035	TORNILLO	TAPPING SCREW
36	TP910R1036	PRENSACABLE	CORD ANCHORAGE
37	TP910R1037	CARCAZA IZQUIERDA	LEFT HOUSING
38	TP910R1038	ETIQUETA	NAME PLATE
39	TP910R1039	TAPA	LEFT ALUM COVER
40	TP910R1040	TORNILLO	SCREW
41	TP910R1041	MANGO LATERAL	AUXILIARY HANDLE
42	TP910R1042	SOPORTE	HANDLE HOOP
43	TP910R1043	MEDIDOR DE PROFUNDIDAD	DEPTH STOP
44	TP910R1044	BULON	HEXAGON HEAD BOLT
45	TP910R1045	CAPACITOR	CAPACITOR
46	TP910R1046	INDUCTOR	INDUCTOR

➔ **Partes de recambio individuales/Individual spare parts: Mandril, corona, resorte, engranaje, perilla, selector, perno, soporte, inducido, Carbones y portacarbones e interruptor/ chuck, gear, spring, impact gear, knob, reed, lever pin, bearing support, rotor, carbon brush and holder and switch (Red marked parts)**